



# STGB20NB37LZ

## N-CHANNEL CLAMPED 20A - D<sup>2</sup>PAK INTERNALLY CLAMPED PowerMESH™ IGBT

TYPE	V <sub>CES</sub>	V <sub>CE(sat)</sub>	I <sub>c</sub>
STGB20NB37LZ	CLAMPED	< 2.0 V	20 A

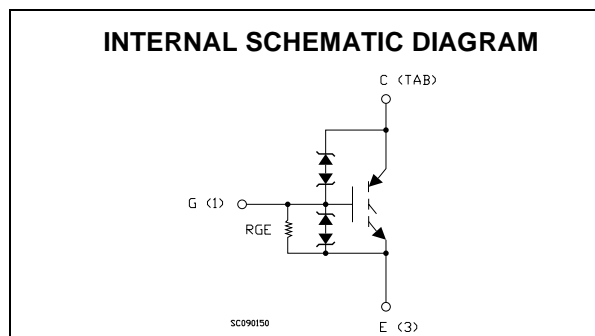
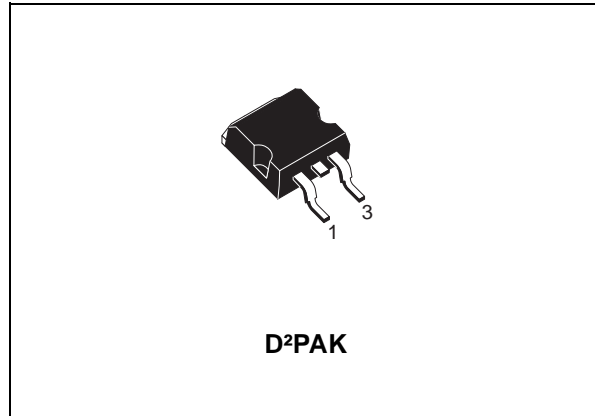
- POLYSILICON GATE VOLTAGE DRIVEN
- LOW THRESHOLD VOLTAGE
- LOW ON-VOLTAGE DROP
- LOW GATE CHARGE
- HIGH CURRENT CAPABILITY
- HIGH VOLTAGE CLAMPING FEATURE
- ADD SUFFIX "T4" FOR ORDERING IN TAPE & REEL

### DESCRIPTION

Using the latest high voltage technology based on a patented strip layout, STMicroelectronics has designed an advanced family of IGBTs, the PowerMESH™ IGBTs, with outstanding performances. The built in collector-gate zener exhibits a very precise active clamping while the gate-emitter zener supplies an ESD protection.

### APPLICATIONS

- AUTOMOTIVE IGNITION



### ORDERING INFORMATION

SALES TYPE	MARKING	PACKAGE	PACKAGING
STGB20NB37LZT4	GB20NB37LZ	D <sup>2</sup> PAK	TAPE & REEL

## STGB20NB37LZ

### ABSOLUTE MAXIMUM RATINGS

Symbol	Parameter	Value	Unit
$V_{CES}$	Collector-Emitter Voltage ( $V_{GS} = 0$ )	CLAMPED	V
$V_{ECR}$	Emitter-Collector Voltage	20	V
$V_{GE}$	Gate-Emitter Voltage	CLAMPED	V
$I_C$	Collector Current (continuous) at $T_C = 25^\circ\text{C}$	40	A
$I_C$	Collector Current (continuous) at $T_C = 100^\circ\text{C}$	20	A
$I_{CM} (\blacksquare)$	Collector Current (pulsed)	80	A
$E_{as}$	Single Pulse Energy $T_c = 25^\circ\text{C}$	700	mJ
$P_{TOT}$	Total Dissipation at $T_C = 25^\circ\text{C}$	200	W
	Derating Factor	1.33	W/°C
$E_{SD}$	ESD (Human Body Model)	8	KV
$T_{stg}$	Storage Temperature	-55 to 175	°C
$T_j$	Max. Operating Junction Temperature		

(■) Pulse width limited by safe operating area

### THERMAL DATA

$R_{thj-case}$	Thermal Resistance Junction-case Max	0.75	°C/W
$R_{thj-amb}$	Thermal Resistance Junction-ambient Max	62.5	°C/W

### ELECTRICAL CHARACTERISTICS ( $T_{CASE} = 25^\circ\text{C}$ UNLESS OTHERWISE SPECIFIED) OFF

Symbol	Parameter	Test Conditions	Min.	Typ.	Max.	Unit
$BV_{(CES)}$	Clamped Voltage	$I_C = 2\text{ mA}, V_{GE} = 0, T_C = -40^\circ\text{C}$		405		V
		$I_C = 2\text{ mA}, V_{GE} = 0, T_C = 25^\circ\text{C}$	375	400	425	V
		$I_C = 2\text{ mA}, V_{GE} = 0, T_C = 150^\circ\text{C}$		395		V
$BV_{(ECR)}$	Emitter Collector Break-down Voltage	$I_C = 75\text{ mA}, T_C = 25^\circ\text{C}$	20	28		V
$BV_{GE}$	Gate Emitter Break-down Voltage	$I_G = \pm 2\text{ mA}$	12	14	16	V
$I_{CES}$	Collector cut-off Current ( $V_{GE} = 0$ )	$V_{CE} = 15\text{ V}, V_{GE} = 0, T_C = 150^\circ\text{C}$			10	$\mu\text{A}$
		$V_{CE} = 200\text{ V}, V_{GE} = 0, T_C = 150^\circ\text{C}$			100	$\mu\text{A}$
$I_{GES}$	Gate-Emitter Leakage Current ( $V_{CE} = 0$ )	$V_{GE} = \pm 10\text{ V}, V_{CE} = 0$	$\pm 300$	$\pm 660$	$\pm 1000$	$\mu\text{A}$
$R_{GE}$	Gate Emitter Resistance		10	15	30	$\text{K}\Omega$

ON (\*)

Symbol	Parameter	Test Conditions	Min.	Typ.	Max.	Unit
$V_{GE(th)}$	Gate Threshold Voltage	$V_{CE} = V_{GE}, I_C = 250\mu\text{A}, T_C = -40^\circ\text{C}$	1.2			V
		$V_{CE} = V_{GE}, I_C = 250\mu\text{A}, T_C = 25^\circ\text{C}$	1	1.4	2	V
		$V_{CE} = V_{GE}, I_C = 250\mu\text{A}, T_C = 150^\circ\text{C}$	0.6			V
$V_{CE(SAT)}$	Collector-Emitter Saturation Voltage	$V_{CE} = 4.5\text{ V}, I_C = 10\text{ A}, T_C = 25^\circ\text{C}$		1.1	1.8	V
		$V_{CE} = 4.5\text{ V}, I_C = 10\text{ A}, T_C = 150^\circ\text{C}$		1.0	1.7	V
		$V_{CE} = 4.5\text{ V}, I_C = 20\text{ A}, T_C = 25^\circ\text{C}$		1.35	2.0	V
		$V_{CE} = 4.5\text{ V}, I_C = 20\text{ A}, T_C = 150^\circ\text{C}$		1.25	2.0	V

## DYNAMIC

Symbol	Parameter	Test Conditions	Min.	Typ.	Max.	Unit
$g_{fs}$ (1)	Forward Transconductance	$V_{CE} = 25 \text{ V}$ , $I_C = 20 \text{ A}$		35		S
$C_{ies}$	Input Capacitance	$V_{CE} = 25 \text{ V}$ , $f = 1 \text{ MHz}$ , $V_{GE} = 0$		2300		pF
$C_{oes}$	Output Capacitance			165		pF
$C_{res}$	Reverse Transfer Capacitance			28		pF
$Q_g$	Gate Charge	$V_{CE} = 280 \text{ V}$ , $I_C = 20 \text{ A}$ , $V_{GE} = 5 \text{ V}$		51		nC

## FUNCTIONAL CHARACTERISTICS

Symbol	Parameter	Test Conditions	Min.	Typ.	Max.	Unit
II	Latching Current	$V_{Clamp} = 250 \text{ V}$ , $T_C = 125 \text{ }^\circ\text{C}$ $R_{GOFF} = 1 \text{ K}\Omega$ , $V_{GE} = 4.5 \text{ V}$		40		A
U.I.S.	Functional Test Open Secondary Coil	$R_{GOFF} = 1 \text{ K}\Omega$ , $L = 1.6 \text{ mH}$ , $T_C = 125 \text{ }^\circ\text{C}$		20		A

## SWITCHING ON

Symbol	Parameter	Test Conditions	Min.	Typ.	Max.	Unit
$t_{d(on)}$	Turn-on Delay Time	$V_{CC} = 250 \text{ V}$ , $I_C = 20 \text{ A}$ $R_G = 1 \text{ K}\Omega$ , $V_{GE} = 4.5 \text{ V}$		2.3		$\mu\text{s}$
$t_r$	Rise Time			0.6		$\mu\text{s}$
$(di/dt)_{on}$	Turn-on Current Slope	$V_{CC} = 250 \text{ V}$ , $I_C = 20 \text{ A}$ $R_G = 1 \text{ K}\Omega$ , $V_{GE} = 4.5 \text{ V}$		550		A/ $\mu\text{s}$
E <sub>on</sub>	Turn-on Switching Losses	$V_{CC} = 250 \text{ V}$ , $I_C = 20 \text{ A}$ , $T_C = 25 \text{ }^\circ\text{C}$ $R_G = 1 \text{ K}\Omega$ , $V_{GE} = 4.5 \text{ V}$ , $T_C = 150 \text{ }^\circ\text{C}$		8.8		mJ
				9.2		mJ

## SWITCHING OFF

Symbol	Parameter	Test Conditions	Min.	Typ.	Max.	Unit
$t_c$	Cross-over Time	$V_{CC} = 250 \text{ V}$ , $I_C = 20 \text{ A}$ , $R_{GE} = 1 \text{ K}\Omega$ , $V_{GE} = 4.5 \text{ V}$		4.8		$\mu\text{s}$
$t_r(V_{off})$	Off Voltage Rise Time			2.6		$\mu\text{s}$
$t_{d(off)}$	Delay Time			2.0		$\mu\text{s}$
$t_f$	Fall Time			11.5		$\mu\text{s}$
E <sub>off(**)</sub>	Turn-off Switching Loss			11.8		mJ
$t_c$	Cross-over Time	$V_{CC} = 250 \text{ V}$ , $I_C = 20 \text{ A}$ , $R_{GE} = 1 \text{ K}\Omega$ , $V_{GE} = 4.5 \text{ V}$ $T_j = 125 \text{ }^\circ\text{C}$		7.8		$\mu\text{s}$
$t_r(V_{off})$	Off Voltage Rise Time			3.5		$\mu\text{s}$
$t_{d(off)}$	Delay Time			3.9		$\mu\text{s}$
$t_f$	Fall Time			12.0		$\mu\text{s}$
E <sub>off(**)</sub>	Turn-off Switching Loss			17.8		mJ

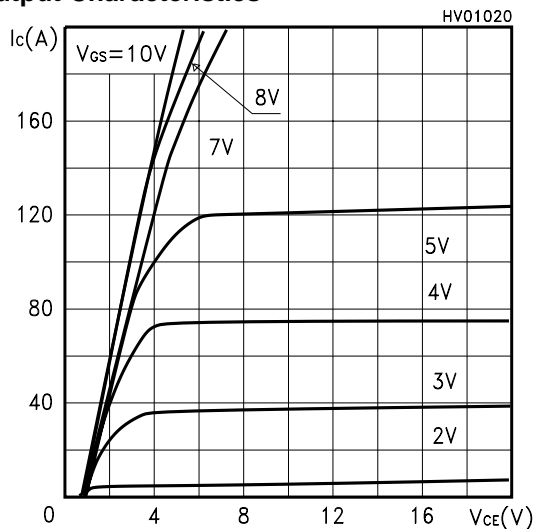
(1) Pulsed: Pulse duration = 300  $\mu\text{s}$ , duty cycle 1.5 %.

(\*) Pulse width limited by max. junction temperature.

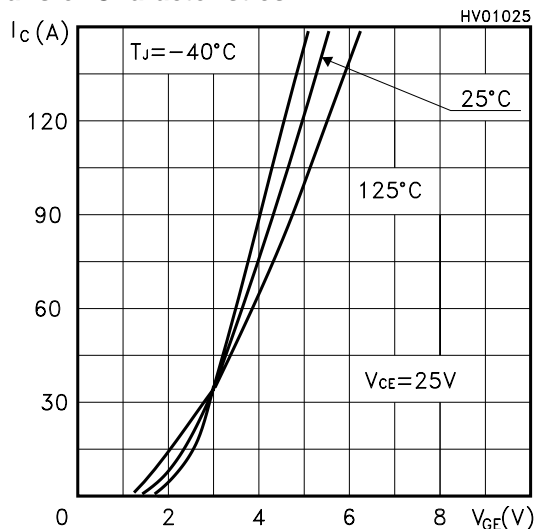
(\*\*) Losses Include Also the Tail

# STGB20NB37LZ

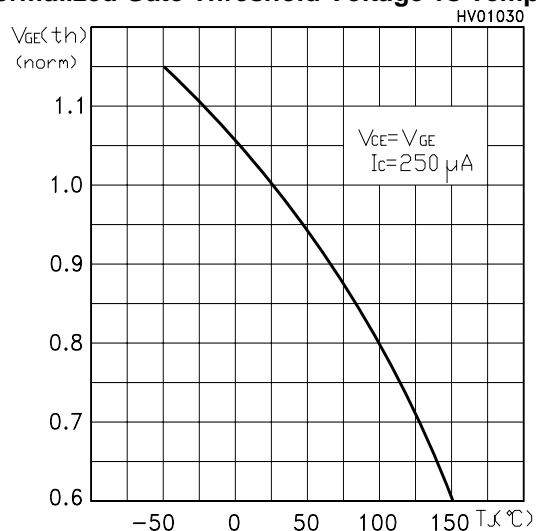
## Output Characteristics



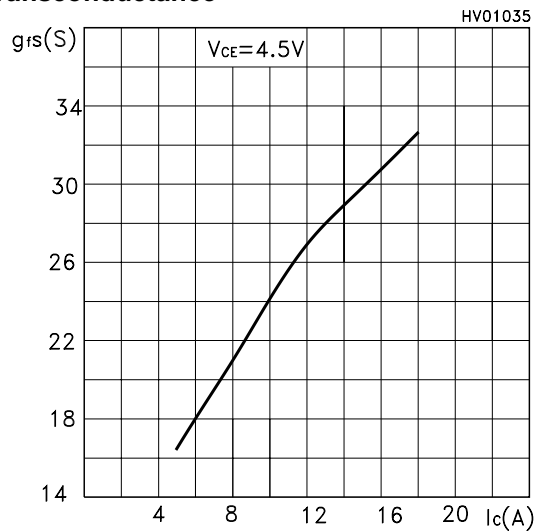
## Transfer Characteristics



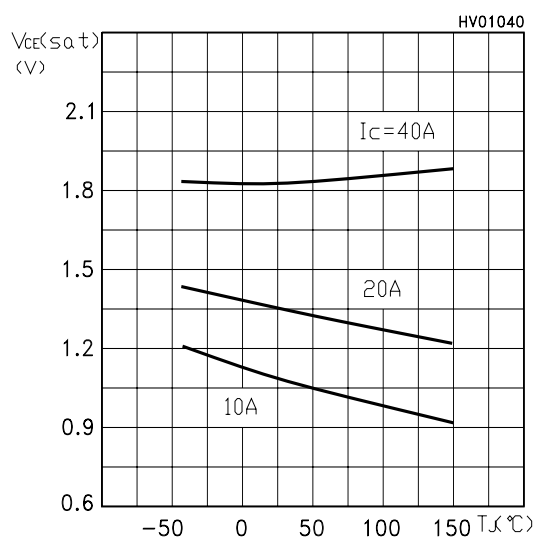
## Normalized Gate Threshold Voltage vs Temp.



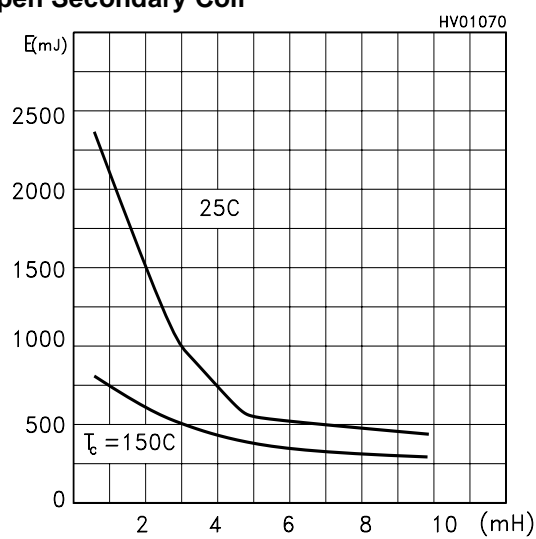
## Transconductance



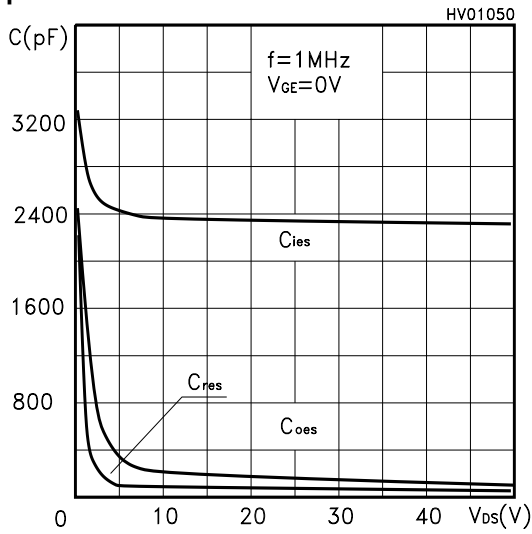
## Collector-Emitter On Voltage vs Temperature



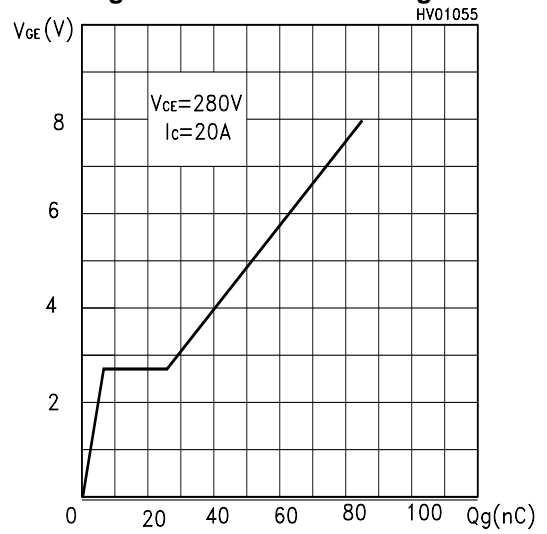
## Self Clamped Inductive Switching Energy vs Open Secondary Coil



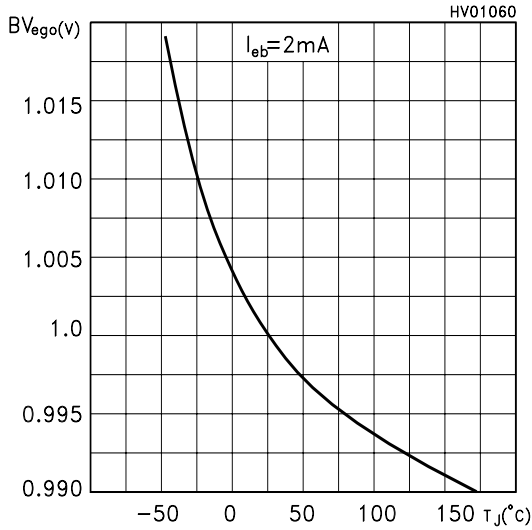
Capacitance Variations



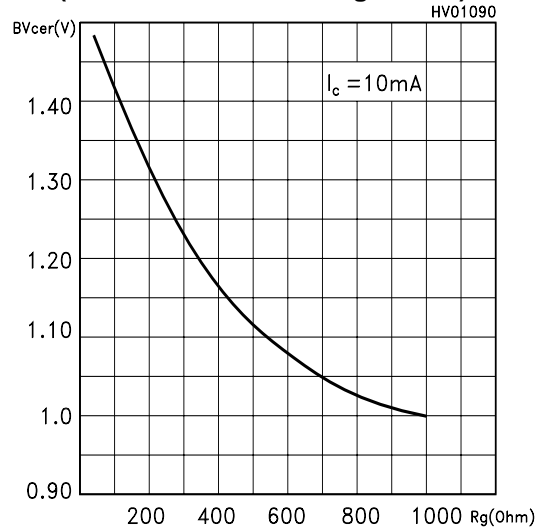
Gate Charge vs Gate-Emitter Voltage



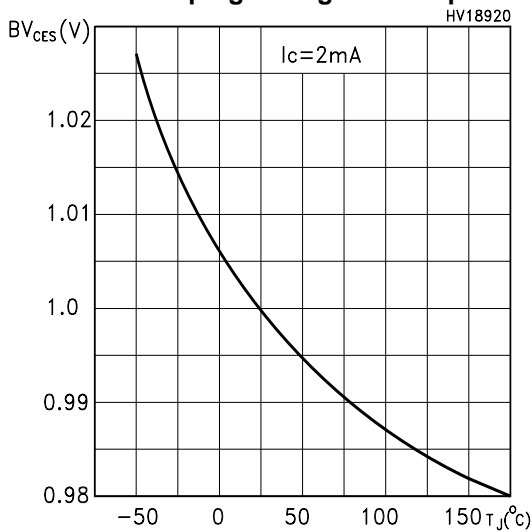
Normalized B<sub>VGE0</sub> (Zener Gate-Emitter) vs Temperature



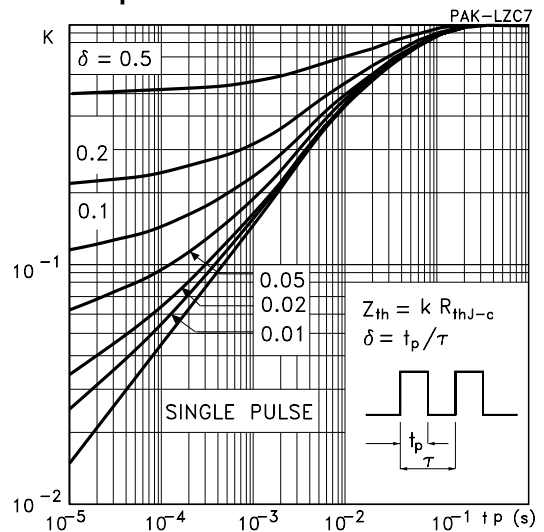
Normalized Clamping Voltage vs Gate Resistance (Inductive Switch Configuration)



Normalized Clamping Voltage vs Temperature

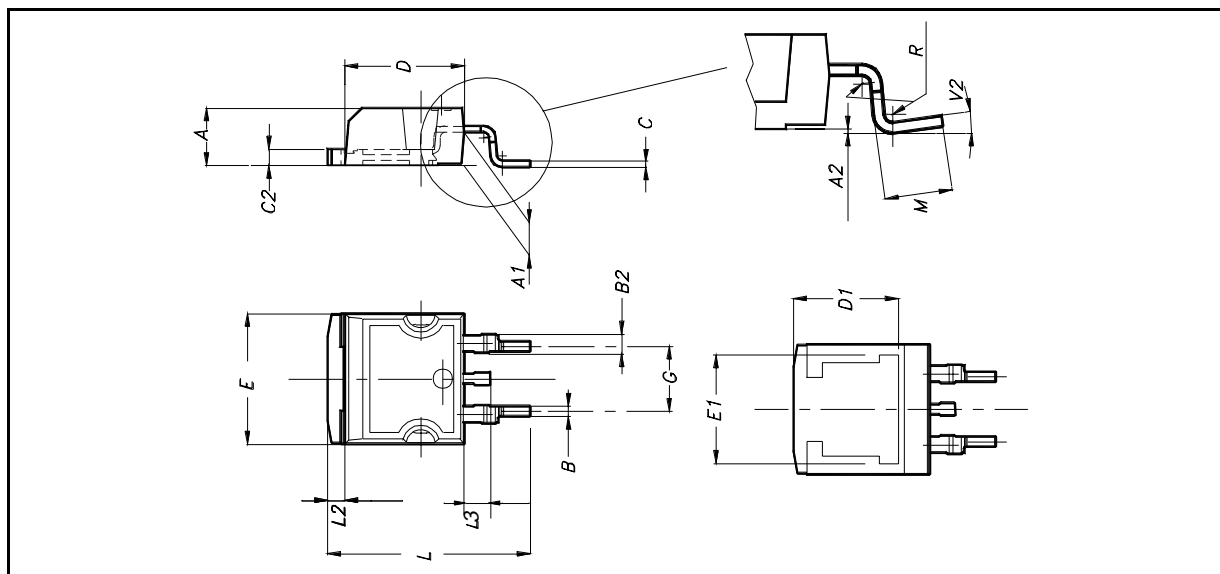


Thermal Impedance

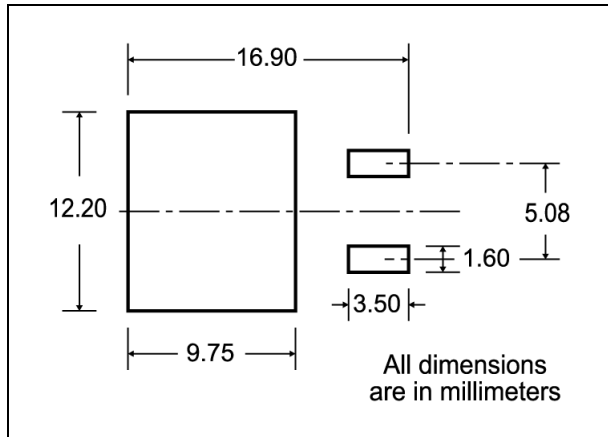


**D<sup>2</sup>PAK MECHANICAL DATA**

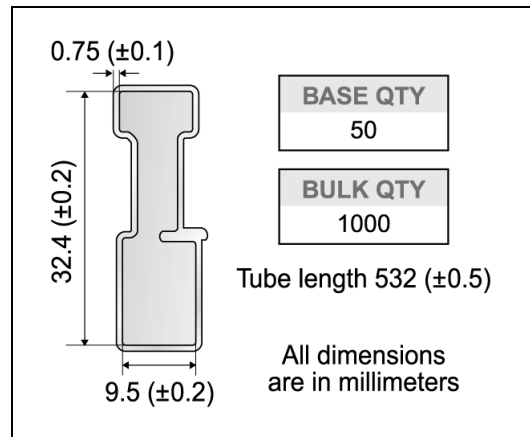
DIM.	mm.			inch		
	MIN.	TYP	MAX.	MIN.	TYP.	MAX.
A	4.4		4.6	0.173		0.181
A1	2.49		2.69	0.098		0.106
A2	0.03		0.23	0.001		0.009
B	0.7		0.93	0.027		0.036
B2	1.14		1.7	0.044		0.067
C	0.45		0.6	0.017		0.023
C2	1.23		1.36	0.048		0.053
D	8.95		9.35	0.352		0.368
D1		8			0.315	
E	10		10.4	0.393		
E1		8.5			0.334	
G	4.88		5.28	0.192		0.208
L	15		15.85	0.590		0.625
L2	1.27		1.4	0.050		0.055
L3	1.4		1.75	0.055		0.068
M	2.4		3.2	0.094		0.126
R		0.4			0.015	
V2	0°		8°			



**D<sup>2</sup>PAK FOOTPRINT**



**TUBE SHIPMENT (no suffix)\***



**TAPE AND REEL SHIPMENT (suffix "T4")\***

Diagram showing the tape mechanical data. It includes a circular reel with a diameter 'A' and a central hub with diameter 'D'. A 'Tape slot in core for tape start' is shown with a '2.5mm min. width'. A '40 mm min. Access hole at slot location' is also indicated. Other dimensions include 'B', 'C', 'N', and 'G measured at hub'. The 'Full radius' of the reel is also shown.

**TAPE MECHANICAL DATA**

DIM.	mm		inch	
	MIN.	MAX.	MIN.	MAX.
A0	10.5	10.7	0.413	0.421
B0	15.7	15.9	0.618	0.626
D	1.5	1.6	0.059	0.063
D1	1.59	1.61	0.062	0.063
E	1.65	1.85	0.065	0.073
F	11.4	11.6	0.449	0.456
K0	4.8	5.0	0.189	0.197
P0	3.9	4.1	0.153	0.161
P1	11.9	12.1	0.468	0.476
P2	1.9	2.1	0.075	0.082
R	50		1.574	
T	0.25	0.35	0.0098	0.0137
W	23.7	24.3	0.933	0.956

**REEL MECHANICAL DATA**

DIM.	mm		inch	
	MIN.	MAX.	MIN.	MAX.
A		330		12.992
B	1.5		0.059	
C	12.8	13.2	0.504	0.520
D	20.2		0.795	
G	24.4	26.4	0.960	1.039
N	100		3.937	
T		30.4		1.197

BASE QTY	BULK QTY
1000	1000

Diagrams showing the tape and reel shipment details. The top diagram shows a 'TOP COVER TAPE' with dimensions 'K<sub>0</sub>', 'D', 'P<sub>2</sub>', 'P<sub>0</sub>', 'E', 'F', 'w', 'B<sub>0</sub>', 'D<sub>1</sub>', 'A<sub>0</sub>', and 'P<sub>1</sub>'. It also indicates a '10 pitches cumulative tolerance on tape +/- 0.2 mm' and the 'Center line of cavity'. The bottom diagram shows the 'TRL' (Tape Reel Load) with 'FEED DIRECTION' and 'Bending radius R min.'.

Information furnished is believed to be accurate and reliable. However, STMicroelectronics assumes no responsibility for the consequences of use of such information nor for any infringement of patents or other rights of third parties which may result from its use. No license is granted by implication or otherwise under any patent or patent rights of STMicroelectronics. Specifications mentioned in this publication are subject to change without notice. This publication supersedes and replaces all information previously supplied. STMicroelectronics products are not authorized for use as critical components in life support devices or systems without express written approval of STMicroelectronics.

© The ST logo is a registered trademark of STMicroelectronics

© 2003 STMicroelectronics - Printed in Italy - All Rights Reserved  
STMicroelectronics GROUP OF COMPANIES

Australia - Brazil - Canada - China - Finland - France - Germany - Hong Kong - India - Israel - Italy - Japan - Malaysia - Malta - Morocco  
Singapore - Spain - Sweden - Switzerland - United Kingdom - United States.

© <http://www.st.com>